



Quick Start Guide

Included in the package:

- WiJET.Video
- Antenna
- 5V DC power adapter
- CD-ROM with application software and technical manuals
- Quick Start Guide
- Registration Card

Step 1: Hardware Setup

1. Connect the VGA cable from the projector/monitor to the VGA port at the rear of the WiJET.Video unit.
2. Connect the 5V DC power adapter to the WiJET.Video unit. The ON LED should turn solid amber and the unit will begin to boot up.
3. Once the WiJET has booted up, a banner page can be seen on the projector/monitor. The LINK LED on the WiJET should be blinking amber.
4. Optionally, connect a pair of computer speakers to the stereo jack of the WiJET.Video.
5. The WiJET.Video unit now is ready for connection to an 802.11b/g wireless enabled computer.

Step 2: Wireless Connection Setup

These instructions are for computers using Microsoft® Windows XP. (The process should be similar for older versions of the Microsoft® Windows OS).

1. Note the WiJET's SSID located at the top left of the banner page screen. Normally this is "**WIJET-V**".
2. Make sure that the wireless adapter is set to operate in **infrastructure** mode.
3. Right-click on the wireless connection icon and select "View Available Wireless Connections".
4. Select the WiJET.Video's SSID from the available wireless networks connection list.
5. Wait for Microsoft® Windows XP to assign the computer a valid IP address – this can take several minutes.

Step 3: Installing the PSM

There are several ways to install the Presentation Session Manager (PSM) application that is needed to operate a WiJET.Video. These instructions explain only the process of downloading the PSM directly from the WiJET.Video.

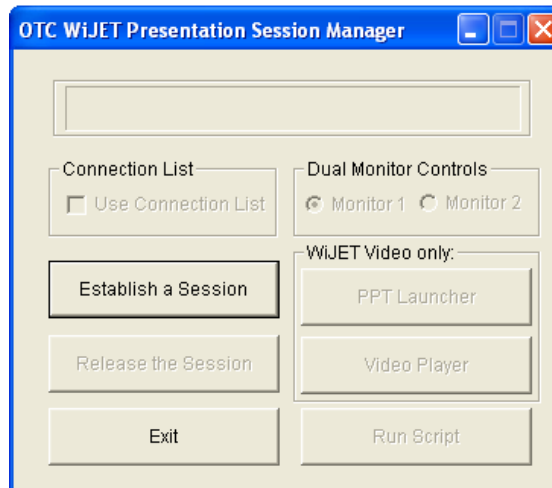
1. Open a web-browser (MS Explorer).
2. Enter the following into the browser's address bar.
http://168.254.98.171:8888
3. The WiJET.Video will offer a file for download. Usually MS Explorer will advise that it has blocked this download. Just click on the pale yellow security options bar and select "Download File...".
4. Save the file "**wijetpsm.exe**" to the computer's desktop.
5. Once the package has been downloaded, double-click on its icon and then allow it to run and then unzip the package. The PSM will automatically start.



wijetpsm.exe

Note: Use the CD for a permanent installation of the PSM. (See the manual for installation options).

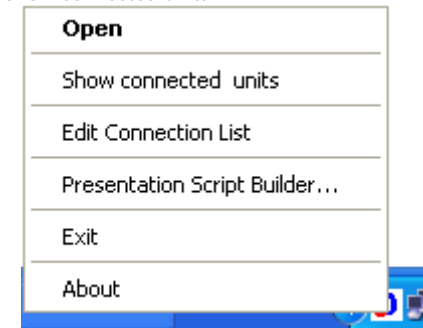
Step 4: Using the WiJET.Video



1. Click on "Establish a Session" to start a session.
2. After a momentary delay, the connecting computer's desktop should be replicated on the projector/monitor attached to the WiJET.Video.
3. Clicking on "PPT Launcher" will allow the wireless presentation of a Microsoft® PowerPoint slideshow.
4. Clicking on "Video Player" will allow the wireless presentation of an MPEG1, MPEG2 or non-commercial DVD movie file.
5. Click on "Release the Session" to end the session.
6. Clicking "Exit" will quit the application.

Step 5: Basic Administration

1. With the WiJET.Video in session, right-click on the WiJET.Video icon on the System Tray and select "Show connected units".



2. Select the WiJET.Video to be administered on the Administration dialog panel and click on the "Admin" button.
3. A web-browser will open and access the WiJET.Video's administrative web pages.
4. Log in using the default account information:

Account: **admin**
Password: **public**

See the **WiJET Technical Manual** to take full advantage of the different features and configuration options available for using and customizing the WiJET.Video for operations. (The manual is on the CD).

For more product information, please visit:
www.otcwireless.com

For technical support, email to
support@otcwireless.com or call (510) 490-8288