



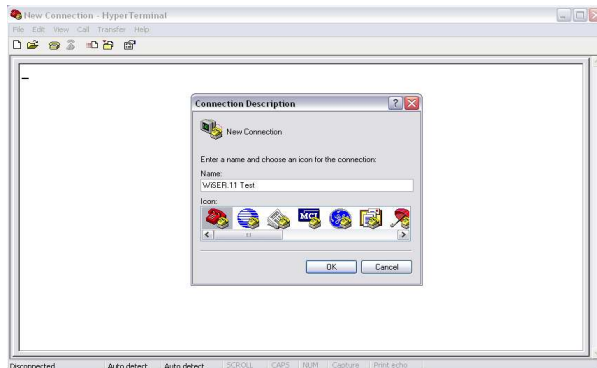
WiSER2400.IP

Basic Data Transport Test

Equipment required:

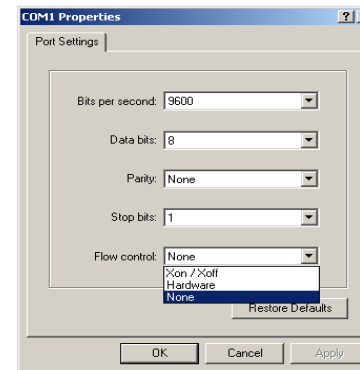
- (2) Windows PC's
 - (1) WiSER2400.IP
 - RS232-RJ45 computer cable
 - 5V power supply
 - 802.11b or 802.11g wireless access point.
1. Plug the WiSER2400.IP into one of the computers via the RS232-RJ45 computer cable.
 2. Connect the other computer either directly to the wireless access point or through a network switch. The computer should be setup with IP address in the 192.168.11.x (*not* 192.168.11.191) subnet, with a subnet mask of 255.255.255.0 and a gateway of 192.168.11.1.
 3. Next, start HyperTerminal (**Start**→ **Programs**→ **Accessories**→ **Communications**→ **HyperTerminal**) on both computers and enter any name for the connection name (fig. 1.1).

Fig. 1.1



4. On the computer with the WiSER2400.IP attached, choose to connect using the COM port that the WiSER is connected to (most likely COM1).
5. For the COM1 Properties dialog, use the following settings: **9600 8-N-1** and set Flow control to "**None**" (fig. 1.2). Click OK. The WiSER2400.IP and PC should now be connected.

Fig. 1.2



6. On the other computer, choose to connect with TCP/IP (Winsock) using "**192.168.11.191**" as the Host address and "**8002**" for the Port number.
7. Type something in one terminal window and it should show up on the other side, and vice versa. Make sure that both sides work – this confirms that the WiSER2400.IP passes the basic data transport test

Note:

This document was written with the assumption that the WiSER2400.IP is using its default factory settings. Please adjust accordingly for your situation.